



# Working Instruction, Mechanical

Applicable for C702, C702a & C702c

## CONTENTS

<b>1</b>	<b>Introduction .....</b>	<b>3</b>
1.1	Equipment .....	4
1.2	General cautions .....	5
1.3	Adhesives.....	5
<b>2</b>	<b>Disassembly .....</b>	<b>6</b>
2.1	Overview .....	6
2.1.1	Battery Cover and Battery .....	7
2.1.2	Screw Cover Assembly .....	9
2.1.3	Frame Assembly .....	11
2.1.4	M2 Cover & Front Cover Assembly .....	13
2.1.5	Speaker Box & Antenna Assembly.....	15
2.1.6	LCD Frame Assembly .....	17
<b>3</b>	<b>Replacements.....</b>	<b>21</b>
3.1	Battery Cover .....	22
3.2	Battery .....	22
3.3	Screw Cover .....	22
3.4	Frame .....	22
3.5	M2 Cover and Front Cover.....	22
3.6	Speaker Box and Antenna .....	22
3.7	LCD Frame .....	22
3.8	Vibrator .....	23
3.9	Main Rubber Ring .....	24
3.10	Volume Key .....	25
3.11	Camera Key .....	26
3.12	On/Off Key .....	27
3.13	RF Hole Adhesive .....	28
3.14	BT Antenna .....	29
3.15	ESD Gasket .....	30
3.16	Main Keypad Cover .....	31
3.17	Co-Brand Label.....	33
3.18	Main Keypad .....	34
3.19	Flash FPC .....	35
3.20	Main Antenna .....	36
3.21	Keyboard .....	38
3.22	Receiver.....	40
3.23	LCD Gasket .....	41



3.24	Sony Ericsson Icon .....	42
3.25	3.2 MP AF Camera .....	43
3.26	Speaker Box Gasket.....	45
3.27	Receiver Gasket.....	46
3.28	Liquid Intrusion Indicator .....	47
3.29	Label .....	48
4	Reassembly .....	49
4.1	Overview.....	49
4.1.1	Speaker Box Assy & PCBA.....	50
4.1.2	LCD frame Assy & PCBA .....	51
4.1.3	Front Cover Assy.....	52
4.1.4	M2 Cover.....	53
4.1.5	Frame Assy .....	54
4.1.6	Screw Cover Assy .....	55
4.1.7	Battery & Battery Cover.....	56
5	Revision history .....	58



# 1 Introduction

C702





## 1.1 Equipment

### SPECIAL TOOLS

Special tools:

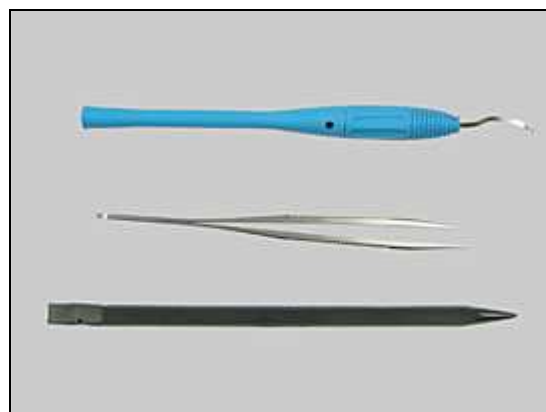
- NTZ 112 459 Torque Screwdriver (or equivalent)
- NTZ 112 288 Torx Bits No. 6
- NTZ 112 1052 JCIS No. 0 Screw Bit
- NTZ 112 302/2 Front Opening Tool
- 1206-7115 Camera removal tool
- NTZ 112 590 Guitar Pick
- NTZ 112 521 Flex Film Assembly Tool



### STANDARD TOOLS

Standard tools have to be locally purchased

- Dentist Hook
- ESD Tweezers
- Nylon Pointer



### ESD EQUIPMENT

Protect the phone from ESD damages whenever it has been opened by using:

- ESD-Wristband
- ESD-Gloves



### LABEL EQUIPMENT

The following special equipment is required when replacing or installing a new Label:

- Hot Air Flow Solder Station
- Zebra Printer connected to Computer





## 1.2 General cautions

The following cautions are considered to be generic for all phone models and will not be repeated in the Disassembly, Replacements and Reassembly sections:

- **SWITCH OFF THE PHONE AND REMOVE ANY MEMORY STICK BEFORE THE START OF THE DISASSEMBLY!**
- **KEEP ALL CONTACT SURFACES CLEAN!**
- **BE CAREFUL WHEN USING TOOLS LIKE THE DENTIST HOOK, TWEEZERS, OPENING TOOLS, GUITAR PICK ETC. TO AVOID SCRATCHES OR DAMAGES TO THE EXTERIOR AND INTERIOR PARTS OF THE PHONE!**
- **BE CAREFUL NOT TO DAMAGE ANY CONTACT SPRINGS!**
- **REMEMBER TO REMOVE THE PROTECTION FOILS ON NEW PARTS SUCH AS THE FRONT COVER AND LCD!**
- **NEVER TOUCH THE DISPLAY GLASS!**
- **USE AIR BLOW EQUIPMENT TO KEEP THE FRONT WINDOW AND DISPLAY MODULE DUST FREE!**

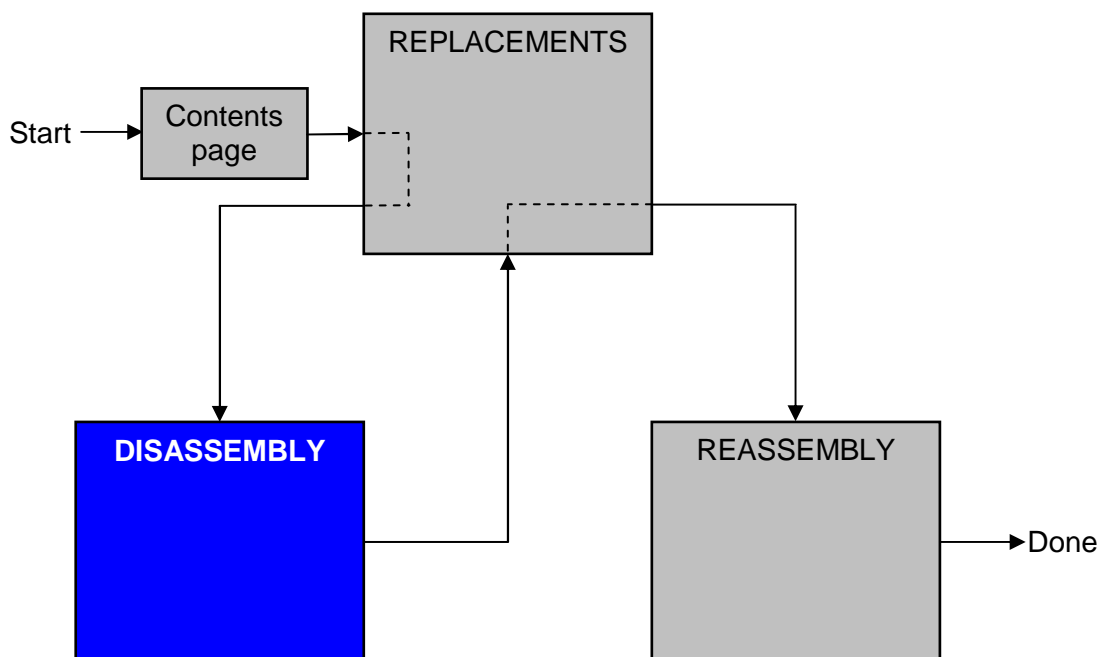
## 1.3 Adhesives

Use Dentist Hook and/or Tweezers to remove the old *Adhesives*.

Clean the surface with isopropyl alcohol before attaching the new *Adhesives*.

## 2 Disassembly

When you are going to replace a part being listed in *Replacements*, the instruction of that section usually begins by directing you to this *Disassembly* section with a specification of the instructions you have to carry out in order to disassemble the phone as far as needed before returning to *Replacements* for the actual replacement.



### 2.1 Overview

The disassembly is done in the following sequence:

1. Battery Cover (a) Battery (b)
2. Screw Cover Assy
3. Frame Assy
4. M2 Cover
5. Front Cover Assy
6. Speaker Box & Antenna
7. LCD Frame Assy (a) PCBA (b)





## 2.1.1 Battery Cover and Battery

Prepare to release the *Battery Cover*.



Use Nylon Pointer to turn the *Latch* anticlockwise.



Unlock the *Latch* as shown in picture.



Lift up the *Battery Cover* at the bottom end.



## Battery continued

Grip the *Battery* at the bottom end using fingers.



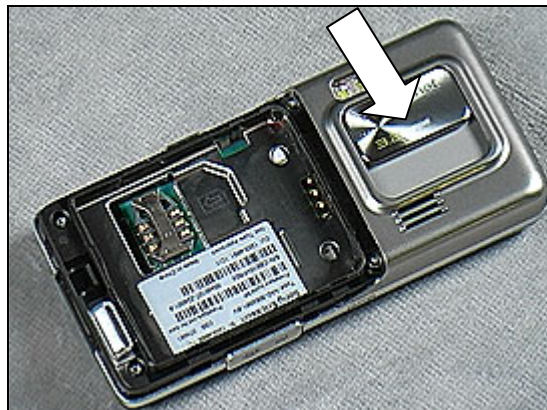
Lift up the *Battery* at the bottom end and remove it.





## 2.1.2 Screw Cover Assembly

Slide the *Camera Lens Cover*.



Open the *Camera Lens Cover* using fingers.



**OPEN THE CAMERA LENS COVER BEFORE STARTING DISASSEMBLY! OTHERWISE, THE CONTACT SPRINGS WILL BE DAMAGED DURING DISASSEMBLY!**

Remove the two *Screws* using JCIS No.0 Screw Bit.



Insert Guitar Pick as shown in picture and unlatch the snap hooks along the left side of the *Screw Cover Assy* as shown by the arrow.

**IF NECESSARY, SLIDE BACK AND FORTH UNTIL ALL HOOKS ARE UNLATCHED!**



## Screw Cover Assembly *continued*

Repeat this at the right side.



Slide along the top to unlatch the snap hooks.



**TAKE CARE WHEN REMOVING THE SCREW COVER THAT WATER DOES FLOW OFF SCREW COVER INTO THE PHONE BACK COVER AREA!**

Carefully lift up the Screw Cover Assy.



## 2.1.3 Frame Assembly

***CHECK FIRSTLY IF THE M2 MEMORY STICK HAS BEEN REMOVED BEFORE CONTINUING!***

Use Torx bit no. 6 to remove the four screws.



Insert the Guitar Pick at the left bottom as shown in picture and slide along the side to unlatch the snap hooks.

***IF NECESSARY, SLIDE BACK AND FORTH UNTIL ALL THE HOOKS ARE UNLATCHED!***



Repeat this for the left side.



Repeat this for the right bottom.





## Frame Assembly *continued*

Repeat this for the right side.



Lift up the *Frame Assembly*.

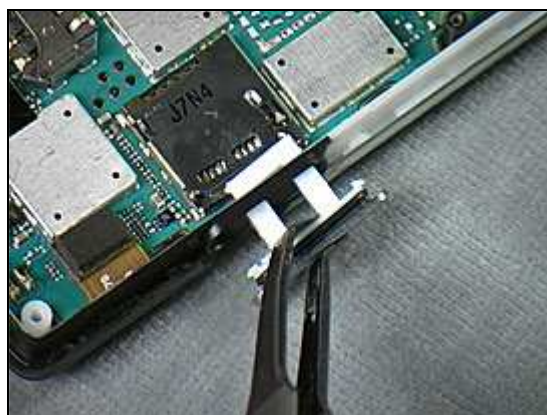


## 2.1.4 M2 Cover & Front Cover Assembly

Push the *M2 Cover* using Front Opening Tool or fingers.



Pull out the *M2 Cover* using Flex Film Assembly Tool or fingers.



Insert the Nylon Pointer at the right side as shown in picture to loose the *Core Unit* from the *Front Cover Assy*.



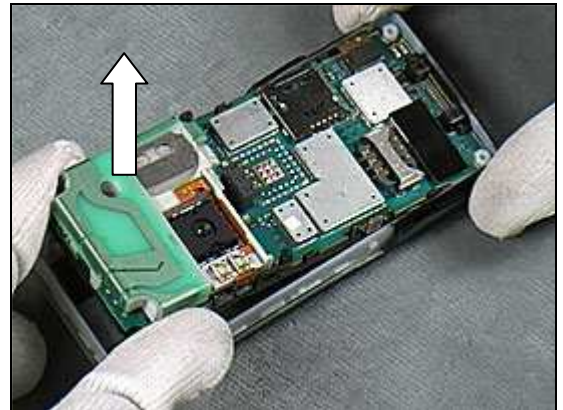
Insert the Front Opening Tool at the left side as shown in picture to loosen the *Core Unit* from the *Front Cover Assy*.



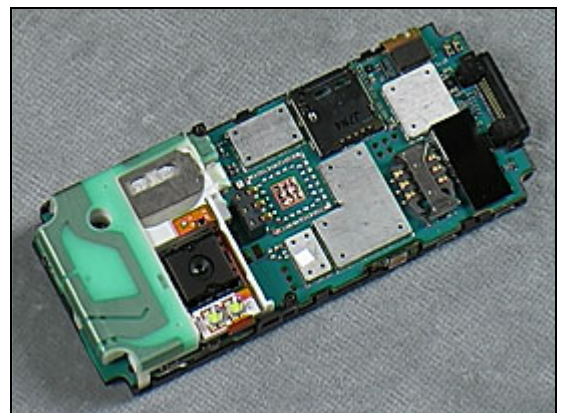


## Front Cover *continued*

Remove the *Core Unit* by lifting it up from the top as shown by the arrow.

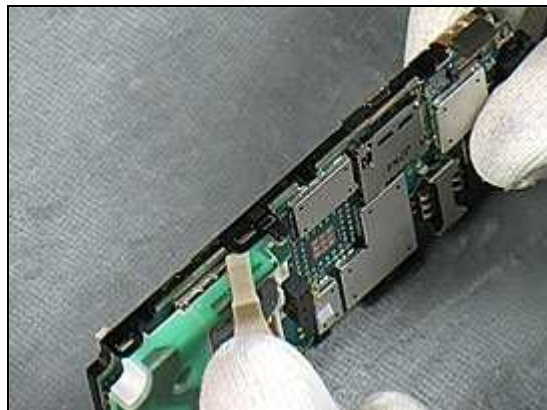


Gently remove the *Core Unit* from the *Front Cover*.



## 2.1.5 Speaker Box & Antenna Assembly

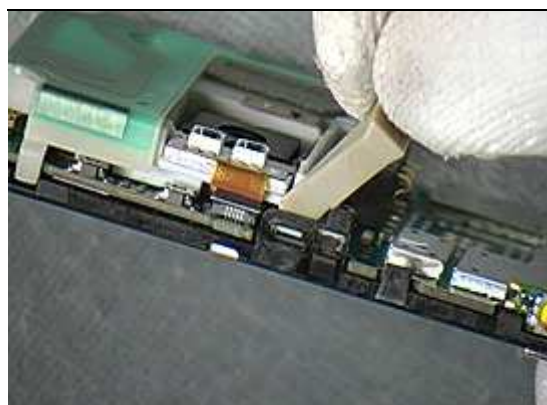
Insert the Front Opening Tool to unlatch the right side hooks between the *Speaker Box* and the *PCBA*.



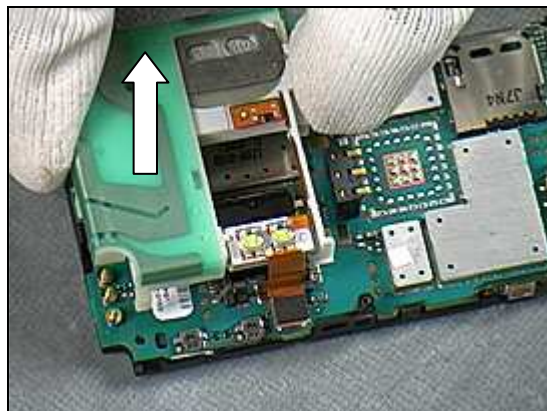
Insert Front Opening Tool to unlatch the right top hooks between the *Speaker Box* and the *PCBA*.



Insert Front Opening Tool to unlatch the left side hooks between the *Speaker Box* and the *PCBA*.



Lift up the *Speaker Box* from the *PCBA*.



## Speaker Box & Antenna Assembly *continued*

Use the Front Opening Tool to unlatch the *Flash FPC Connector* as the arrow shows in the picture.



Gently remove the *Speaker Box* from the *PCBA*.

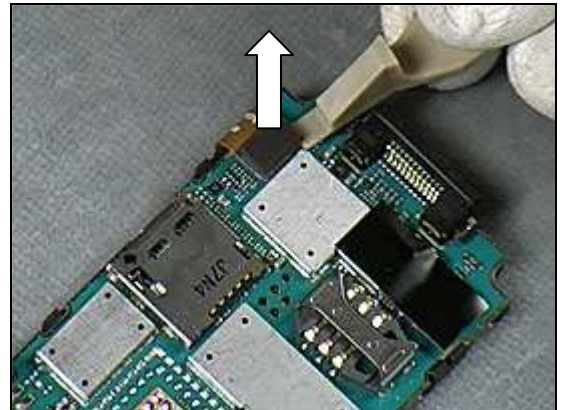






## 2.1.6 LCD Frame Assembly

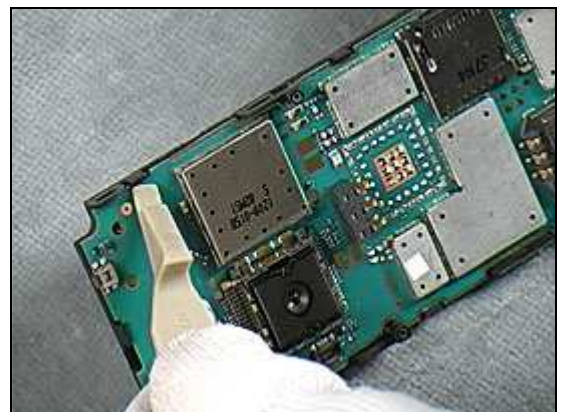
Insert the Front Opening Tool to unlatch the *LCD Connector* as shown in the picture.



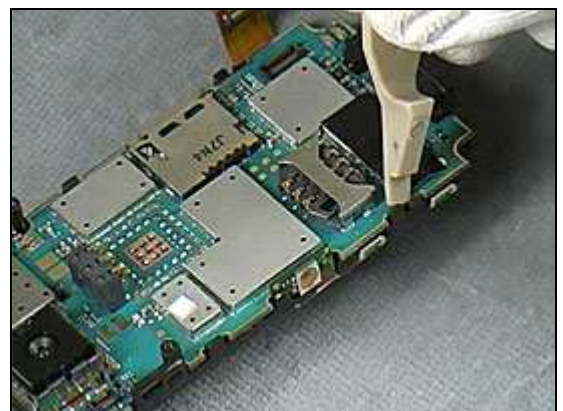
Insert the Front Opening Tool to release the right side hook between the *PCBA* and the *LCD Frame*.



Insert the Front Opening Tool to release the right top Hook between the *PCBA* and the *LCD Frame*.

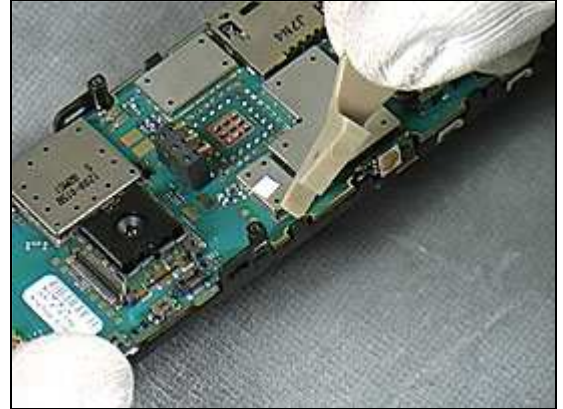


Insert the Front Opening Tool to release the left bottom hook between the *PCBA* and the *LCD Frame*.

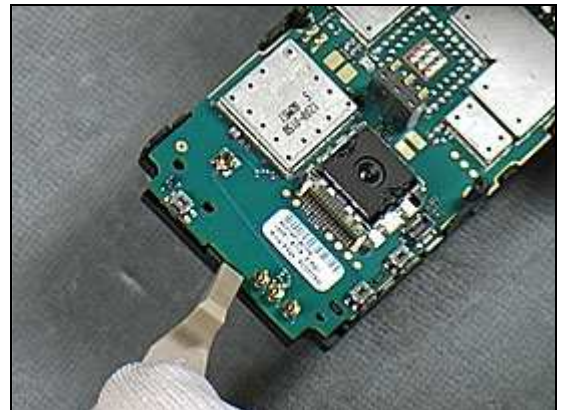


## LCD Frame *continued*

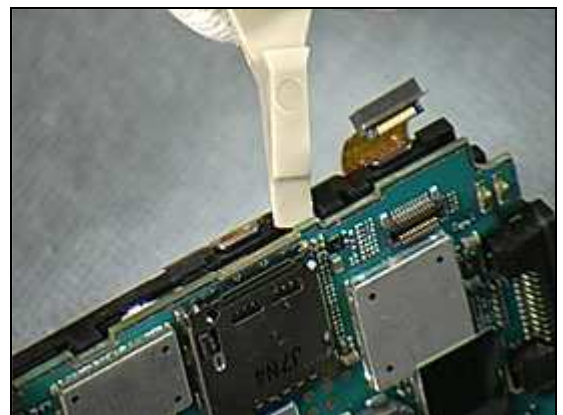
Insert the Front Opening Tool to release the left middle hooks between the *PCBA* and the *LCD Frame*.



Insert the Front Opening Tool to release the top hooks between the *PCBA* and the *LCD Frame*.



Insert the Front Opening Tool to release the right middle hooks between the *PCBA* and the *LCD Frame*.



**BE CAREFUL WHEN UNLATCHING THE LAST HOOK - THE LCD FRAME CAN JUMP OFF THE PCBA!**

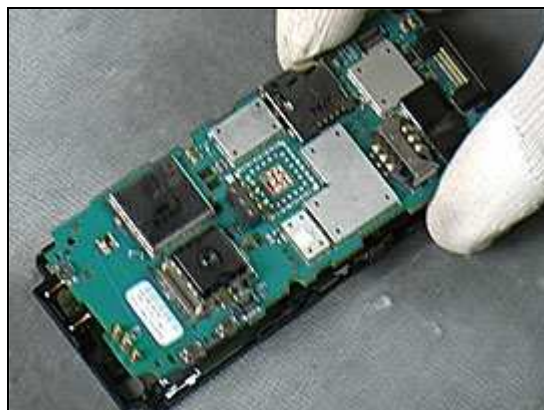
Insert the Front Opening Tool to release the left bottom hooks between the *PCBA* and the *LCD Frame*.



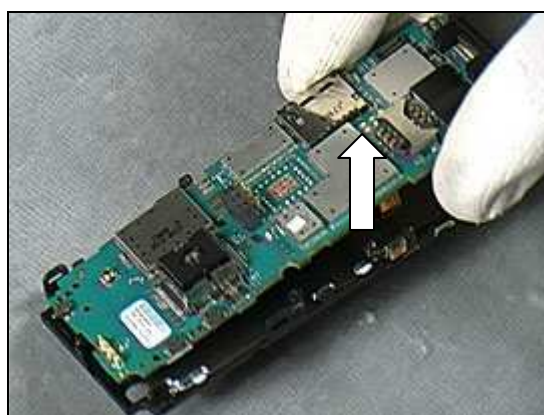


## LCD Frame *continued*

Check that all snap hooks between the *PCBA* and the *LCD Frame* are unlatched.

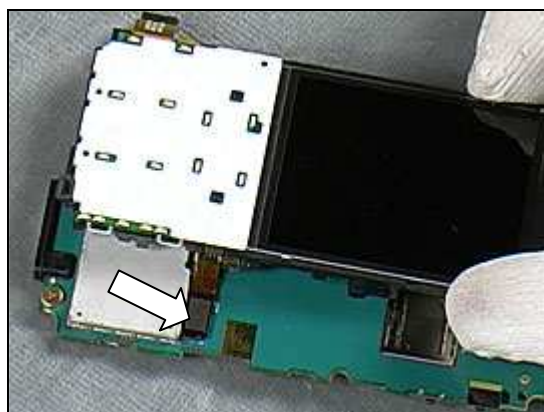


Lift up the *PCBA* from the *LCD Frame*.

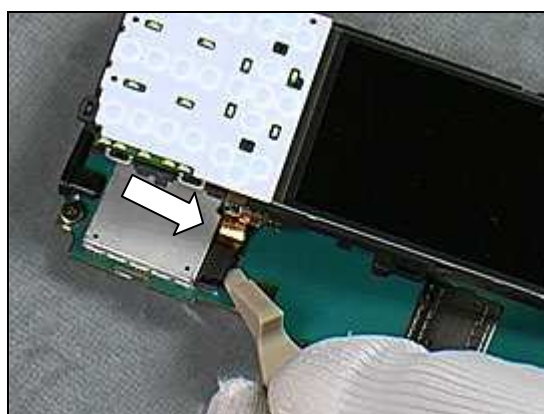


**BE CAREFUL NOT TO DAMAGE THE LCD FLEX!**

Find the *LCD Connector* between the *PCBA* and the *LCD Frame*.

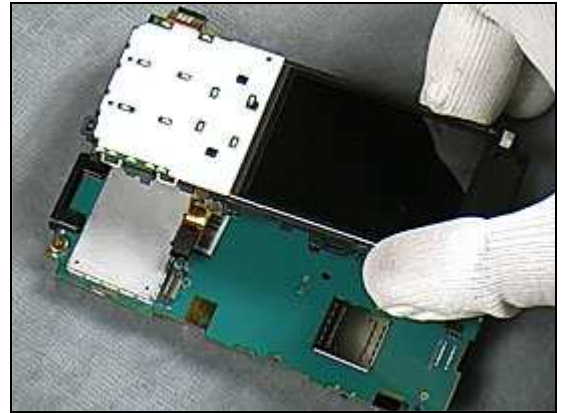


Use the Front Opening Tool to release the *LCD Connector*.



## LCD Frame *continued*

Lift up the *LCD Frame* from the *PCBA*.





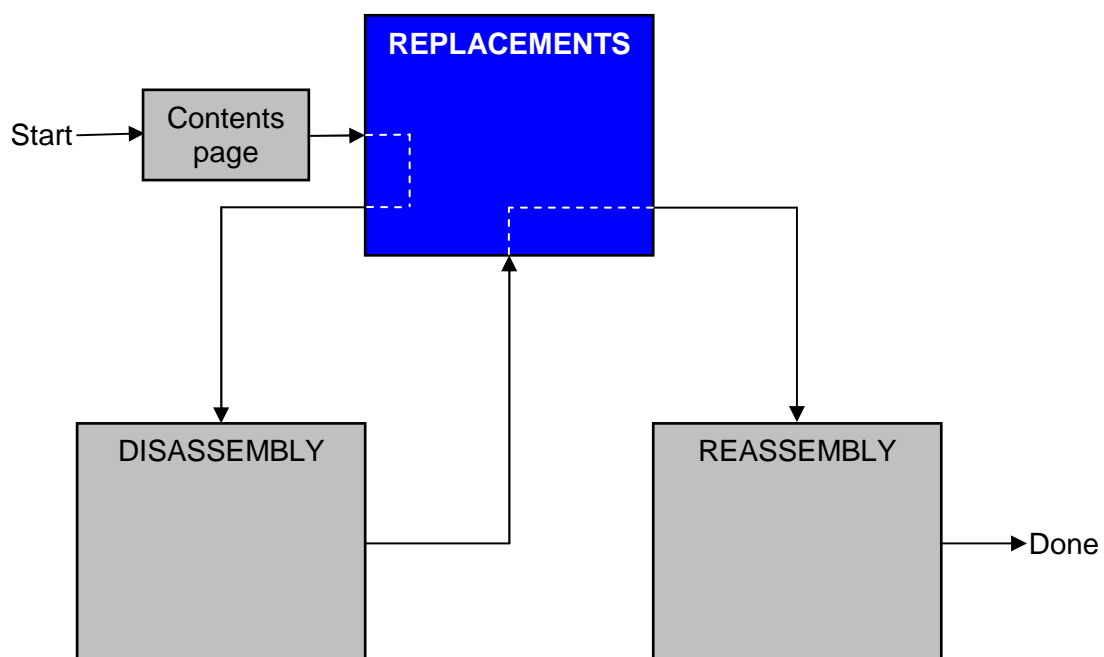
### 3 Replacements

Search for the part to be replaced on the Contents page and go to that instruction to be found in this *Replacements* section.

The instruction usually begins by directing you to the *Disassembly* section with a specification of the instructions you have to carry out in order to disassemble the phone as far as needed before the actual replacement.

Go back to this *Replacements* section and carry out the instruction.

The instruction usually ends by directing you to the *Reassembly* section with a specification of the instructions you have to carry out in order to reassemble the phone.





## 3.1 Battery Cover

*Follow the 2.1.1 Disassembly instructions!*

Prepare a Battery Cover.

*Follow the 4.1.7 Reassembly instructions!*

## 3.2 Battery

*Follow the 2.1.1 Disassembly instructions!*

Prepare a Battery.

*Follow the 4.1.7 Reassembly instructions!*

## 3.3 Screw Cover

*Follow the 2.1.1 – 2.1.2 Disassembly instructions!*

Prepare a Screw Cover.

*Follow the 4.1.6 – 4.1.7 Reassembly instructions!*

## 3.4 Frame

*Follow the 2.1.1 – 2.1.3 Disassembly instructions!*

Prepare a Frame.

*Follow the 4.1.5 – 4.1.7 Reassembly instructions!*

## 3.5 M2 Cover and Front Cover

*Follow the 2.1.1 – 2.1.4 Disassembly instructions!*

Prepare a M2 Cover and a Front Cover.

*Follow the 4.1.4 – 4.1.7 Reassembly instructions!*

## 3.6 Speaker Box and Antenna

*Follow the 2.1.1 – 2.1.5 Disassembly instructions!*

Prepare a Speaker Box and an Antenna.

*Follow the 4.1.1 – 4.1.7 Reassembly instructions!!*

## 3.7 LCD Frame

*Follow the 2.1.1 – 2.1.6 Disassembly instructions!*

Prepare a LCD Frame.

*Follow the 4.1.2 – 4.1.7 Reassembly instructions!*

## 3.8 Vibrator

### REMOVAL

*Follow the 2.1.1 – 2.1.3 Disassembly instructions!*

Remove the *Vibrator* with Flex Film Assembly Tool or Tweezers.

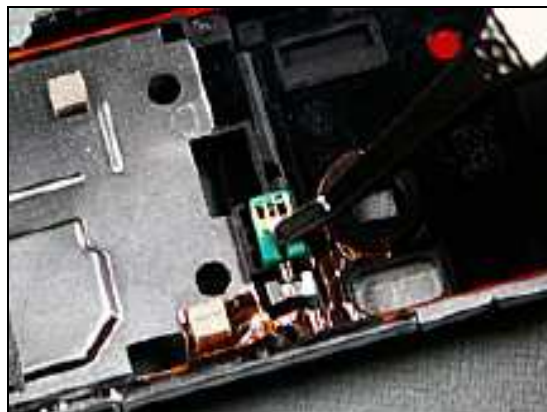
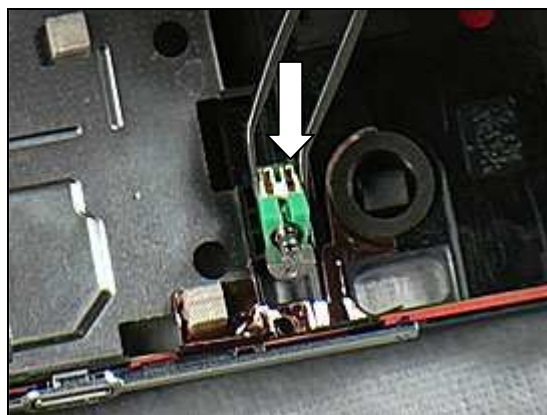
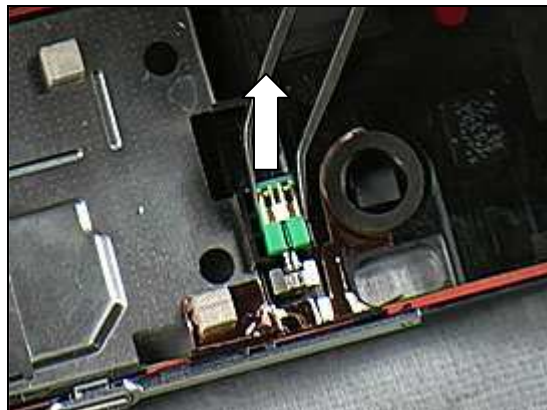
**AVOID TOUCHING METAL CONTACTS!**

### INSTALLATION

Place the *Vibrator* in the cavity.

Position into place using Tweezers.

*Follow the 4.1.5 - 4.1.7 Reassembly instructions!*





## 3.9 Main Rubber Ring

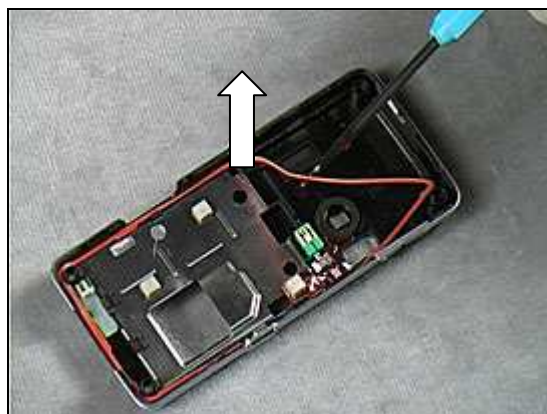
### REMOVAL

*Follow 2.1.1 – 2.1.3 Disassembly instructions!*

Use Dentist Hook to lift the *Main Rubber Ring* from the *Frame*.



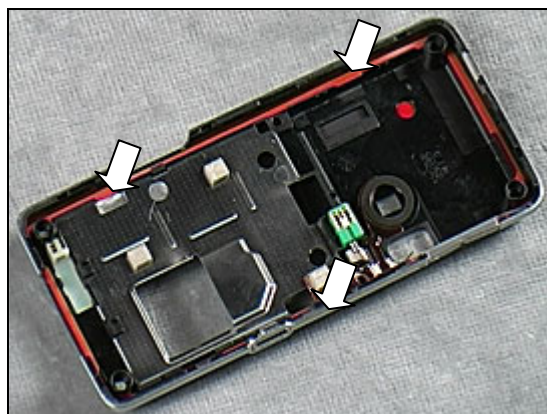
Use the Dentist Hook to remove the *Main Rubber Ring*.



### INSTALLATION

Mount the *Main Rubber Ring* with the three points shown by the arrows in picture.

*Follow 4.1.5 - 4.1.7 Reassembly instructions!*

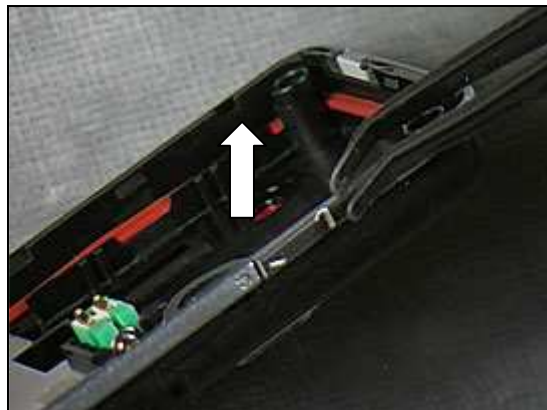


## 3.10 Volume Key

### REMOVAL

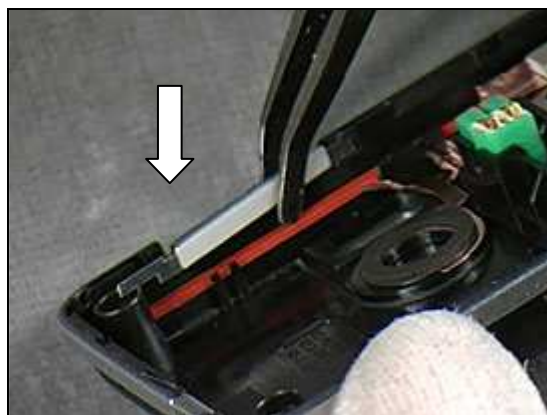
*Follow 2.1.1 – 2.1.3 Disassembly instructions!*

Remove the *Volume Key* using Flex Film Assembly Tool or Tweezers.



### INSTALLATION

Place the *Volume Key* using Flex Film Assembly Tool or Tweezers.



Position into place.

*Follow 4.1.5 – 4.1.7 Reassembly instructions!*

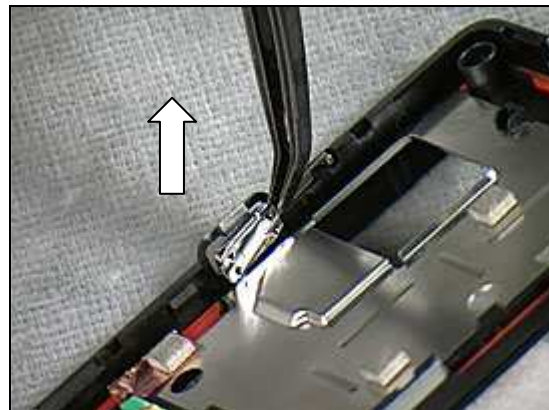


## 3.11 Camera Key

### REMOVAL

*Follow 2.1.1 – 2.1.3 Disassembly instructions!*

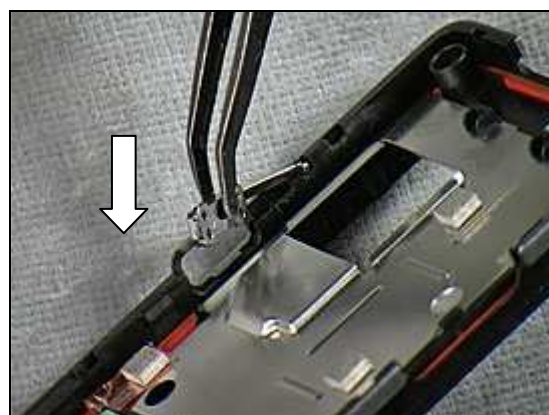
Use Flex Film Assembly Tool to remove the *Camera Key*.



### INSTALLATION

Use Flex Film Assembly Tool to position the *Camera Key*.

*Follow 4.1.5 - 4.1.7 Reassembly instructions!*

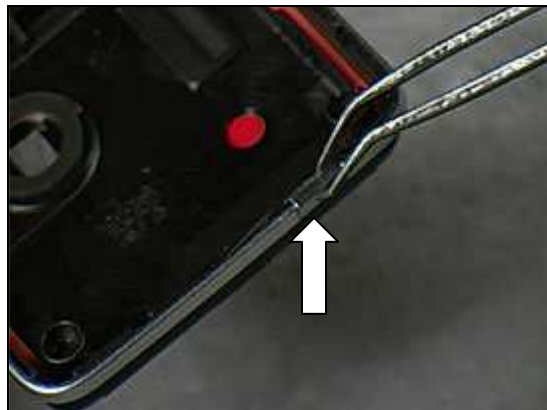


## 3.12 On/Off Key

### REMOVAL

*Follow 2.1.1 – 2.1.3 Disassembly instructions!*

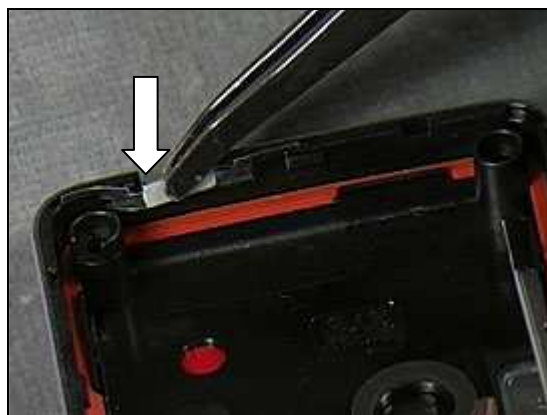
Use Flex Film Assembly Tool or Tweezers to remove the *On/Off Key*.



### INSTALLATION

Use Flex Film Assembly Tool to position the *On/Off Key*.

*Follow 4.1.5 - 4.1.7 Reassembly instructions!*



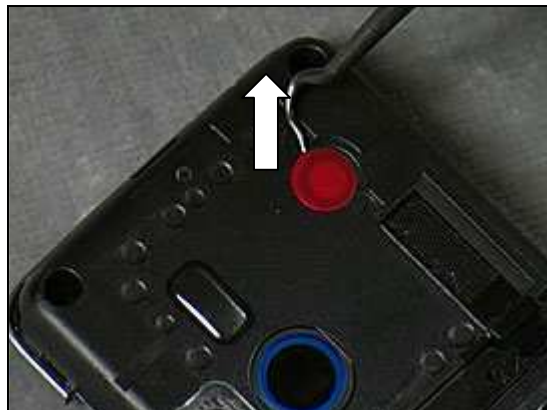


## 3.13 RF Hole Adhesive

### REMOVAL

*Follow 2.1.1 – 2.1.3 Disassembly instructions!*

Use Dentist Hook to remove the old *RF Hole Adhesive*.

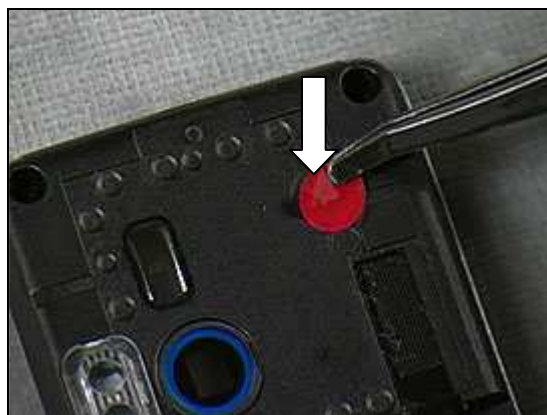


### INSTALLATION

***ALWAYS USE NEW RF HOLE ADHESIVE!***

Use Flex Film Assembly Tool to position the new *RF Hole Adhesive*.

*Follow 4.1.5 - 4.1.7 Reassembly instructions!*



## 3.14 BT Antenna

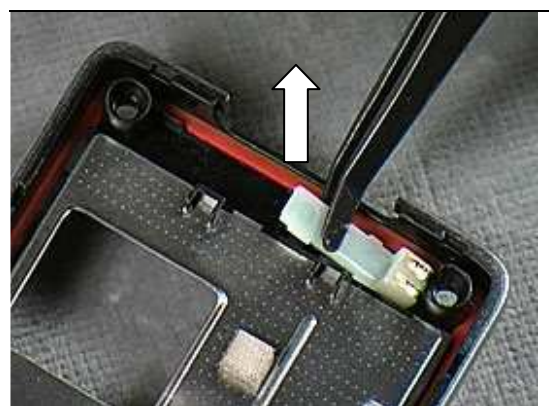
### REMOVAL

*Follow 2.1.1 – 2.1.3 Disassembly instructions!*

Use Tweezers to release the *BT Antenna* hooks.



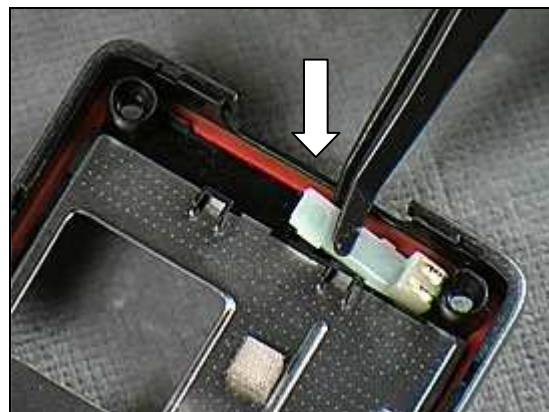
Use Tweezers to remove the *BT Antenna*.



### INSTALLATION

Use Flex Film Assembly Tool to position the *BT Antenna*.

*Follow 4.1.5 - 4.1.7 Reassembly instructions!*

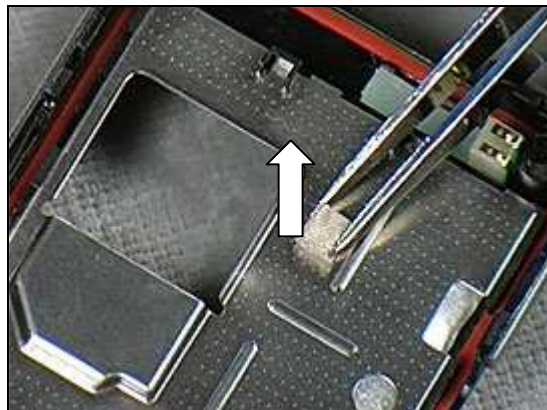


## 3.15 ESD Gasket

### REMOVAL

*Follow 2.1.1 – 2.1.3 Disassembly instructions!*

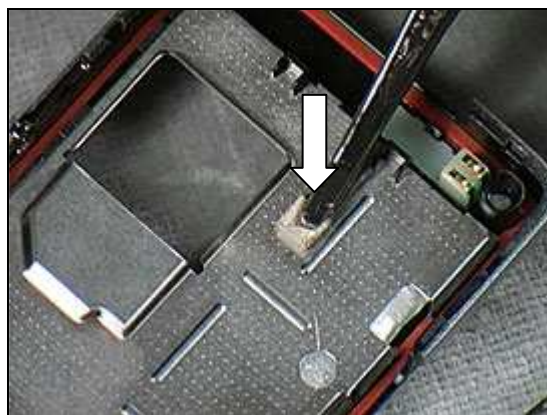
Use Tweezers to remove the *ESD Gasket*.



### INSTALLATION

Use Flex Film Assembly Tool to position the *ESD Gasket*.

*Follow 4.1.5 - 4.1.7 Reassembly instructions!*



## 3.16 Main Keypad Cover

### REMOVAL

*Follow 2.1.1 - 2.1.4 Disassembly instructions!*

Insert the Front Opening Tool at one side as shown in picture to release the *Main Keypad Cover* from the *Front Cover*.



Insert the Front Opening Tool at another side as shown in picture to remove the *Main Keypad Cover* from the *Front Cover*.



### INSTALLATION

Grip the *Main Keypad Cover* using fingers.



Position the *Main Keypad Cover* at the top.





## Main Keypad Cover *continued*

Position the *Main Keypad Cover* at the bottom and snap it into place.

*Follow 4.1.3 - 4.1.7 Reassembly instructions!*



## 3.17 Co-Brand Label

### REMOVAL

*Follow 2.1.1 - 2.1.4 Disassembly instructions!*

Use the Dentist Hook to remove the *Co-Brand Label*.



### INSTALLATION

**CLEAN ADHESIVES ON SURFACE WITH ISOPROPYL ALCOHOL IF NECESSARY!**

Use fingers to position the *Co-Brand Label*.

*Follow 4.1.3 - 4.1.7 Reassembly instructions!*



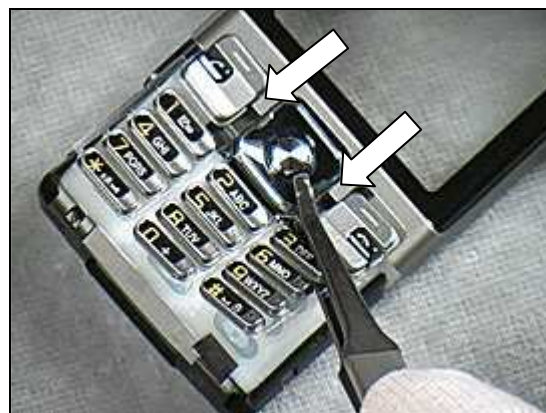
## 3.18 Main Keypad

### REMOVAL

**BE CAREFUL WHEN UNLATCHING THE HOOKS AS ARROWS SHOWN IN PICTURE - OTHERWISE, THE MAIN KEYPAD WILL BE DAMAGED DURING DISASSEMBLY!**

*Follow 2.1.1 - 2.1.4 Disassembly instructions!*

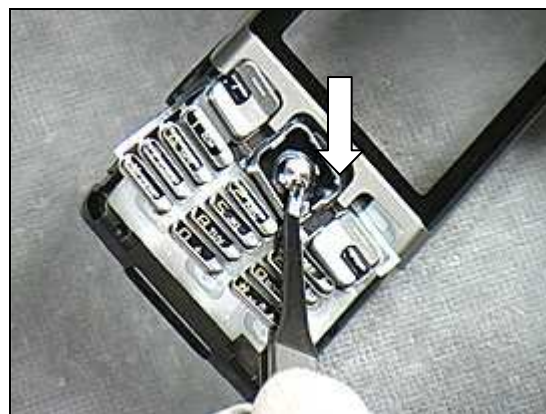
Use Flex Film Assembly Tool to remove the *Main Keypad*.



### INSTALLATION

Use Flex Film Assembly Tool to position the *Main Keypad*.

*Follow 4.1.3 - 4.1.7 Reassembly instructions!*

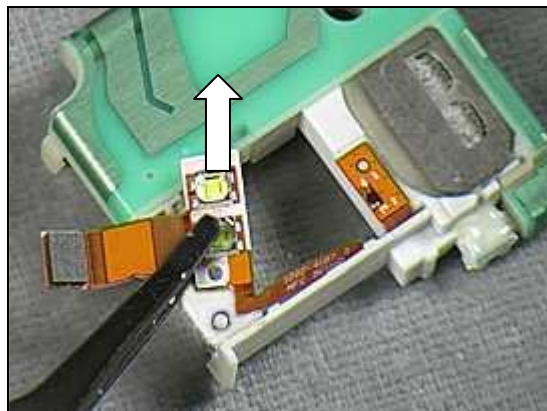


## 3.19 Flash FPC

### REMOVAL

*Follow 2.1.1 - 2.1.5 Disassembly instructions!*

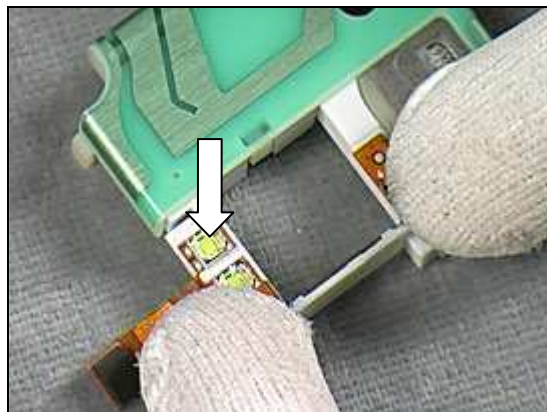
Use Flex Film Assembly Tool to remove the *Flash FPC*.



### INSTALLATION

Use fingers to position the *Flash FPC*.

*Follow 4.1.1 - 4.1.7 Reassembly instructions!*





## 3.20 Main Antenna

### REMOVAL

*Follow 2.1.1 - 2.1.5 Disassembly instructions!*

Insert Front Opening Tool to release the top hook shown in the picture between the *Main Antenna* and the *Speaker Box*.



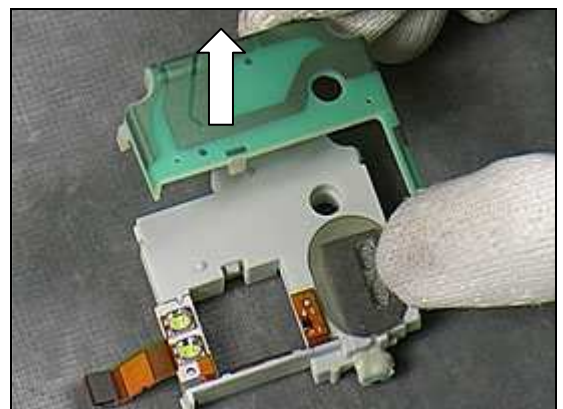
Insert Front Opening Tool to release the middle hook shown in the picture between the *Main Antenna* and the *Speaker Box*.



Insert Front Opening Tool to release the right hook shown in the picture between the *Main Antenna* and the *Speaker Box*.



Lift up the *Main Antenna* from the *Speaker Box*.

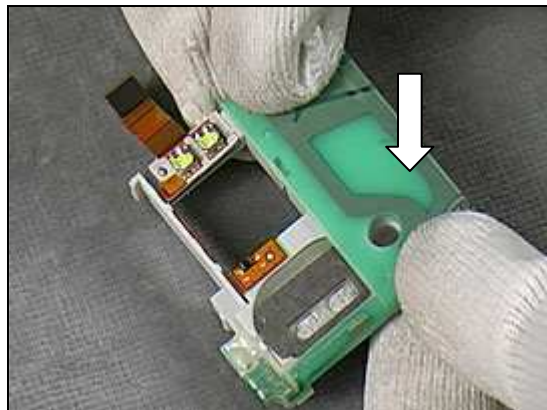


## Main Antenna *continued*

### INSTALLATION

Use fingers to position and snap the *Main Antenna* onto the *Speaker Box*.

*Follow 4.1.1 - 4.1.7 Reassembly instructions!*



## 3.21 Keyboard

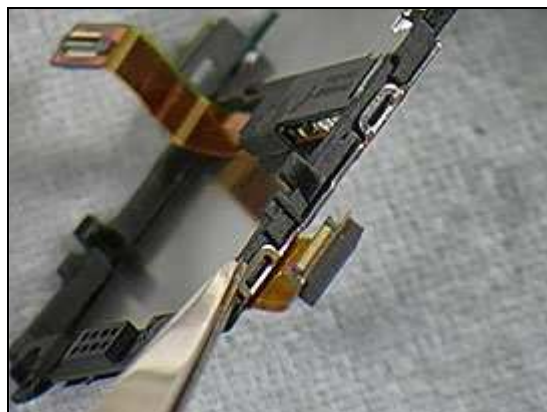
### REMOVAL

*Follow 2.1.1 - 2.1.6 Disassembly instructions!*

Use Flex Film Assembly Tool to unlatch the *Keyfoil Connector* between the *Keyboard* and the *Front Cover*.



Use Tweezers to lift out the *Front Cover* from the *Keyboard*.



### INSTALLATION

Grip the *Keyboard* using fingers.



Position the *Keyboard* onto the *Front Cover*.



## Keyboard *continued*

Use fingers to snap the *Keyfoil Connector* between the *Keyboard* and the *Front Cover*.

*Follow 4.1.2 - 4.1.7 Reassembly instructions!*





## 3.22 Receiver

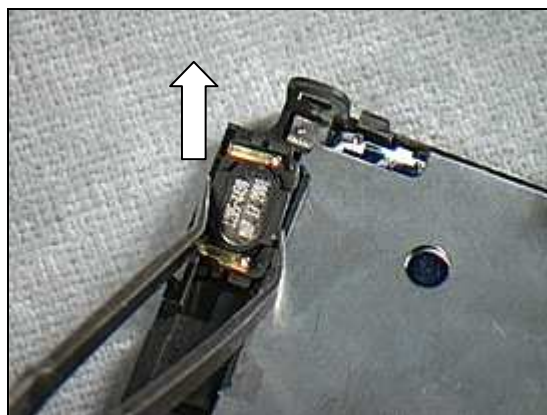
### REMOVAL

Follow 2.1.1 - 2.1.6 Disassembly instructions!

Use the Flex Film Assembly Tool to gently press down the Receiver.



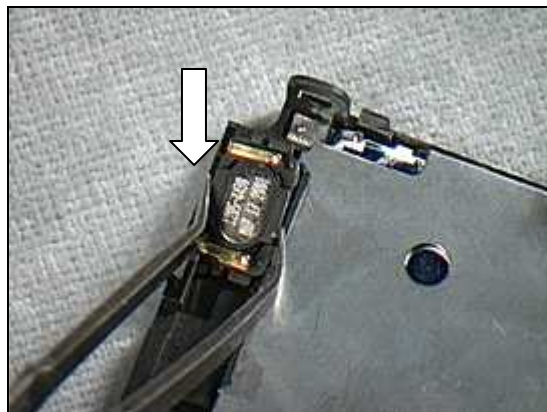
Turn over the *Display Assy* and use Flex Film Assembly Tool to lift out the *Receiver* from the *Display Assy*.



### INSTALLATION

Use the Flex Film Assembly Tool to gently position the Receiver into the *Display Assy*.

Follow 4.1.2 - 4.1.7 Reassembly instructions!



Remove the protect film.

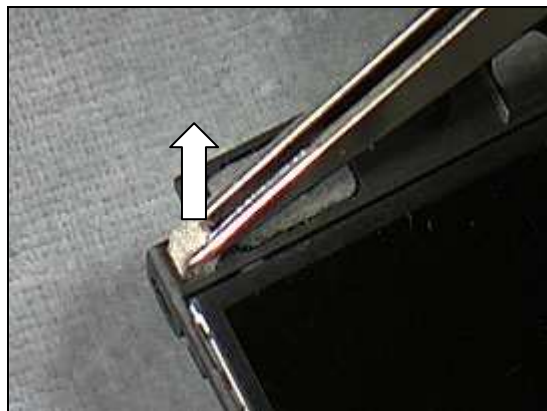


## 3.23 LCD Gasket

### REMOVAL

*Follow 2.1.1 - 2.1.6 Disassembly instructions!*

Use Tweezers to remove the *LCD Gasket*.



### INSTALLATION

Use Flex Film Assembly Tool to position the *LCD Gasket*.

*Follow 4.1.2 - 4.1.7 Reassembly instructions!*



## 3.24 Sony Ericsson Icon

### REMOVAL

Prepare to remove the *Sony Ericsson Icon*.



Use Dentist Hook to remove the *Sony Ericsson Icon*.



### INSTALLATION

**CLEAN ADHESIVES ON SURFACE WITH ISOPROPYL ALCOHOL IF NECESSARY!**

Use Flex Film Assembly Tool to position the *Sony Ericsson Icon* into place.



## 3.25 3.2 MP AF Camera

### REMOVAL

Follow 2.1.1 - 2.1.6 Disassembly instructions!

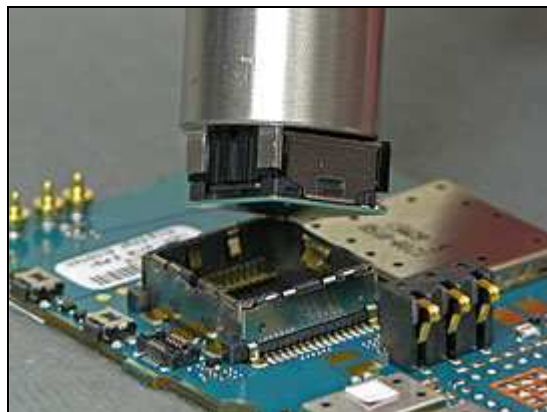
Overview picture.



Use camera removal tool and lower into position.



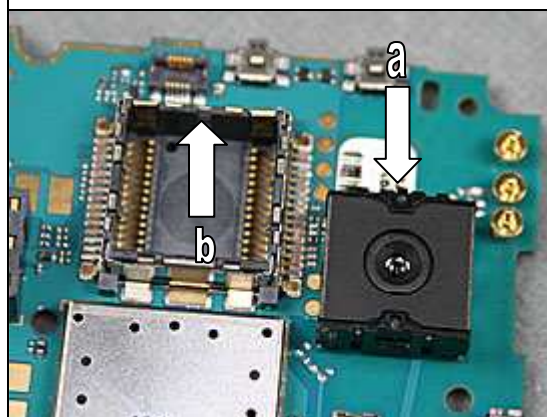
Insert into camera socket and lift upwards as shown in picture.



### INSTALLATION

a. Camera alignment pin.

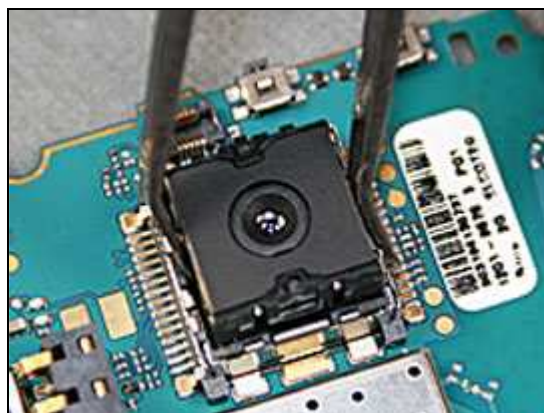
b. Socket alignment slot.





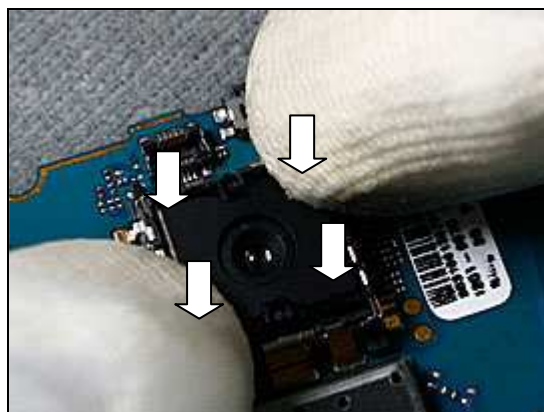
## 3.2 MP AF Camera *continued*

Use flat tweezers to position camera.



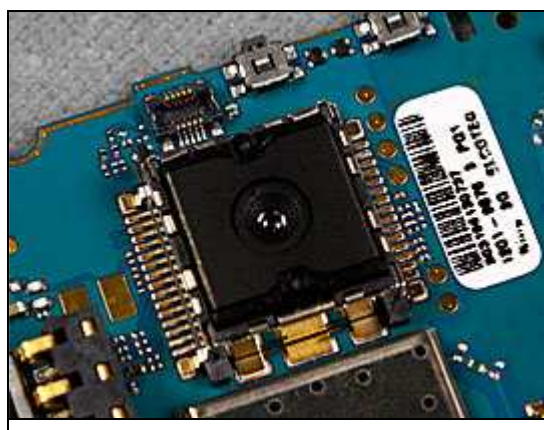
Use fingers to secure at all corners.

***DO NOT TOUCH THE LENS!***



Look like this.

*Follow the 4.1.1 – 4.1.6 Reassembly instructions!*





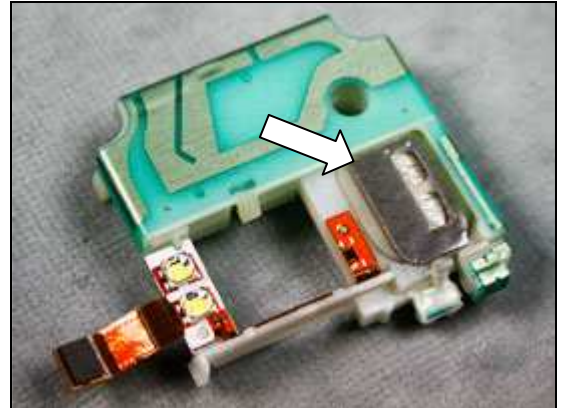
## 3.26 Speaker Box Gasket

### REMOVAL

Follow 2.1.1 - 2.1.5 Disassembly instructions!

**THE ANTENNA FRAME *MUST BE* ATTACHED ON THE SPEAKER BOX WHEN REMOVING THE GASKET; THE ANTENNA FRAME IS FOR PROTECT THE SPEAKERBOX NOT BE DAMAGED BY THE STRONG ADHESIVE!**

Use Tweezers to remove the *Speaker Box Gasket* start from the point shown by the arrow in picture.

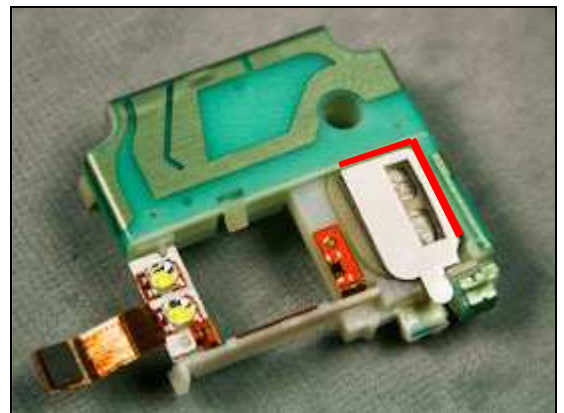


### INSTALLATION

**THE ANTENNA FRAME *MUST BE* ATTACHED ON THE SPEAKER BOX WHEN INSTALLING THE GASKET; THE ANTENNA FRAME IS FOR POSITIONING THE GASKET AS THE RED LINES SHOWING IN PICTURE!**

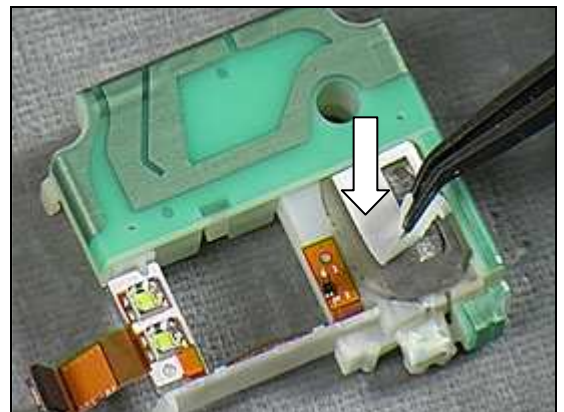
**CLEAN ADHESIVES ON SURFACE WITH ISOPROPYL ALCOHOL IF NECESSARY!**

Use Flex Film Assembly Tool to position the *Speaker Box Gasket*.



Remove the *Protect Film* using Flex Film Assembly Tool.

Follow 4.1.1 - 4.1.7 Reassembly instructions!



## 3.27 Receiver Gasket

### REMOVAL

*Follow 2.1.1 - 2.1.6 Disassembly instructions!*

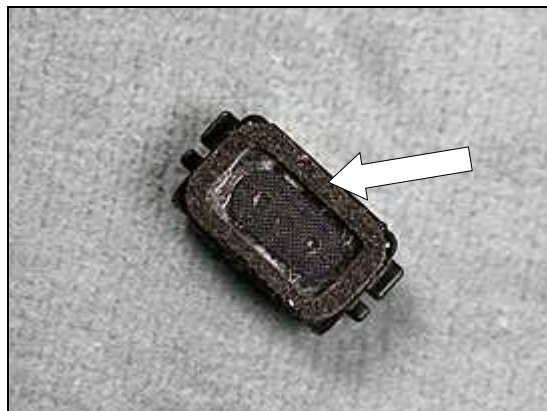
Use Tweezers to remove the *Receiver Gasket*.

**CLEAN ADHESIVES ON SURFACE WITH ISOPROPYL ALCOHOL IF NECESSARY!**

### INSTALLATION

Use Flex Film Assembly Tool to position the *Receiver Box Gasket* and gently remove the *Protect Film*.

*Follow 4.1.2 - 4.1.7 Reassembly instructions!*





## 3.28 Liquid Intrusion Indicator

### INSPECTION

There is one *Liquid Intrusion Indicator* located on the *PCBA*.  
To get access and inspect the indicator:

*Follow 2.1.1 - 2.1.6 Disassembly instructions!*

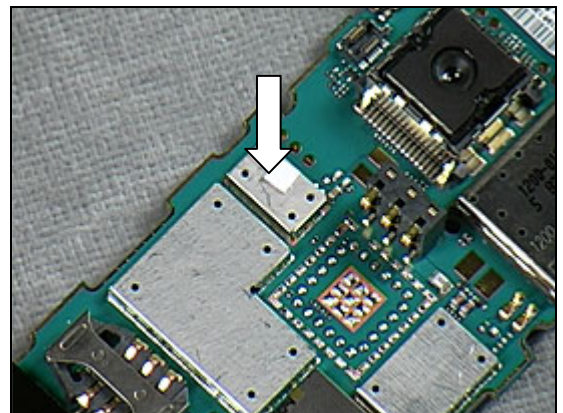
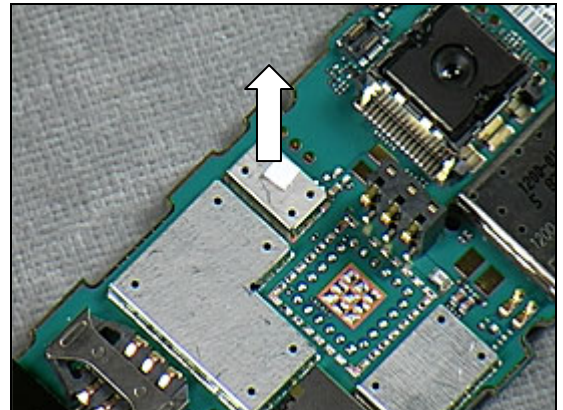
### REMOVAL

Remove the activated *Liquid Intrusion Indicator* with Dentist Hook and Tweezers.

### INSTALLATION

Attach a new *Liquid Intrusion Indicator* with Tweezers and Dentist Hook.

*Follow 4.1.2 - 4.1.7 Reassembly instructions!*







## 3.29 Label

*Follow 2.1.1 Disassembly instructions!*

Read the old label and/or write the information into the "Label make" program before removal

Note the position of the label before removal

Heat up the label by using hot air, if needed.

Carefully remove the label without causing scratches

If there still are residues, clean the surface with isopropyl alcohol

Check that the proper label format is loaded in the Zebra printer.

Write a new label by using the program "Label make" and check that the printing is OK.

Take the new label and place it into the frame as in the adjacent picture.

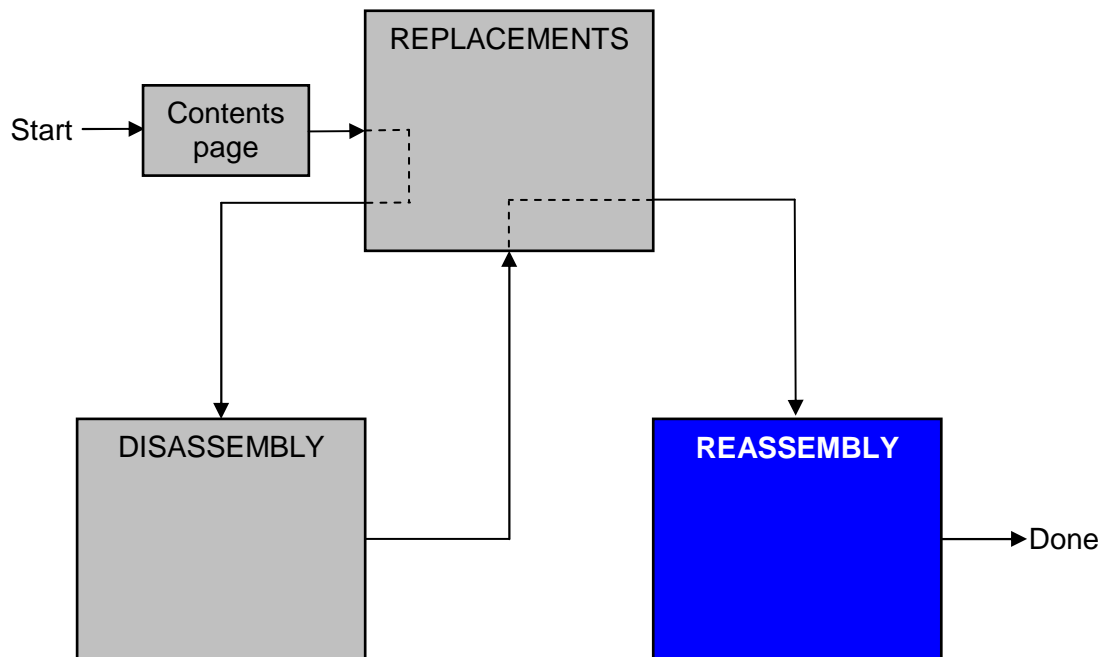
**ONE LABEL ONLY IS ALLOWED!**

*Follow 4.1.7 Reassembly instructions!*



## 4 Reassembly

After replacing a part listed in Replacements, the instruction of that section usually ends by directing you to this Reassembly section with a specification of the instructions you have to carry out in order to reassemble the phone.



### 4.1 Overview

The reassembly is done in the following sequence:

1. LCD Frame Assy (a) PCBA (b)
2. Speaker Box & Antenna
3. Front Cover Assy
4. M2 Cover
5. Frame Assy
6. Screw Cover Assy
7. Battery Cover (a) Battery (b)

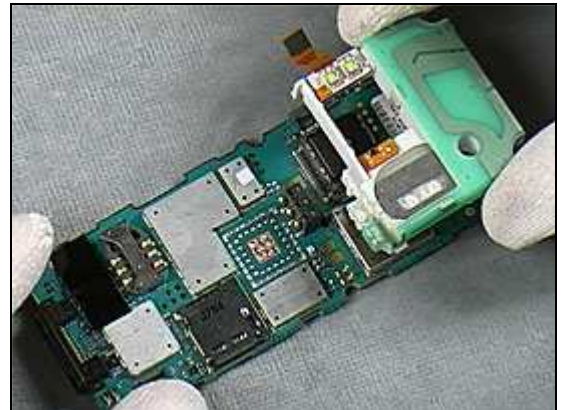


m



## 4.1.1 Speaker Box Assy & PCBA

Position the *Speaker Box Assy* using fingers.



Snap the *Flash FPC Connector* using fingers.

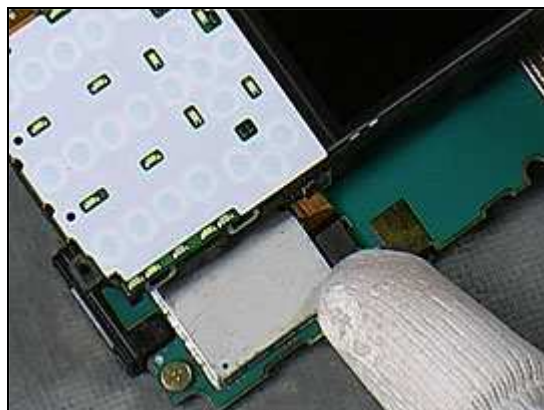


Press down and snap the hooks between the *Speaker Box* and the *PCBA*.



## 4.1.2 LCD frame Assy & PCBA

Use fingers to position the *LCD Frame Assy* and attach the *LCD connector* between the *LCD* and the *PCBA*.



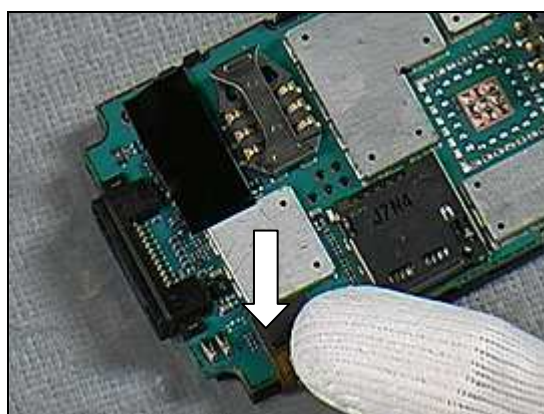
Press down and snap the top hooks.



Press down and snap the bottom hooks.



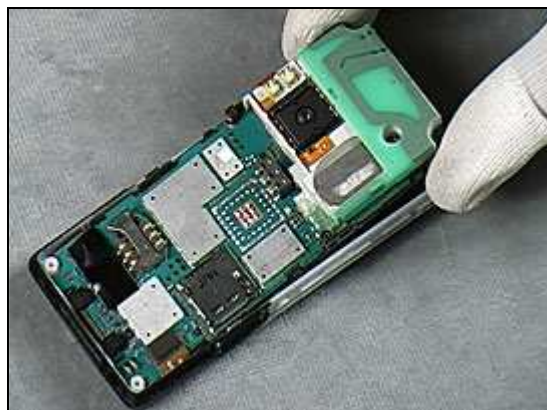
Use fingers to attach the *LCD connector* on the *PCBA* as shown by the arrow.



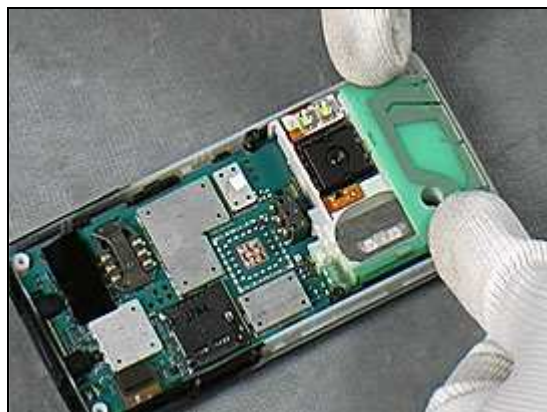


### 4.1.3 Front Cover Assy

Use fingers to place the *Front Cover Assy* into the bottom position firstly.

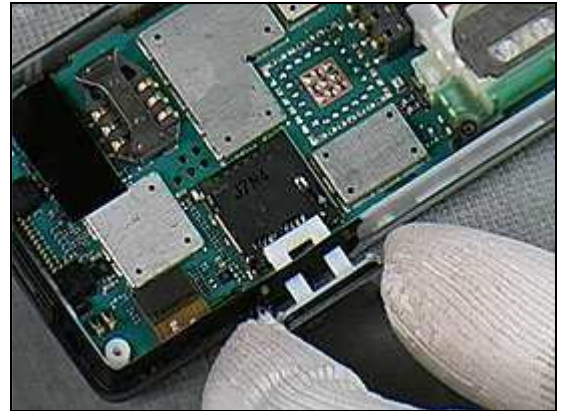


Use fingers to place and snap the *Front Cover Assy* into the top position.



#### 4.1.4 M2 Cover

Install the *M2 Cover* using fingers as shown in picture.



Position the *M2 Cover* into place as shown in picture.



## 4.1.5 Frame Assy

Grip the *Frame Assy* using fingers.

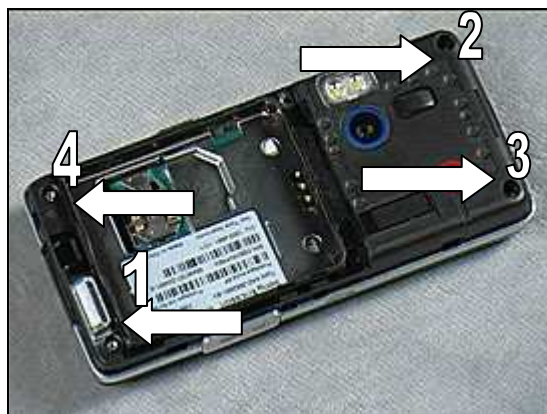


Position the *Frame Assy* into the *Core Unit*.



**TIGHTEN THE SCREWS ACCORDING TO THE SCREWING SEQUENCE SHOWN BY THE NUMBERS IN PICTURE!**

Use **18 NCM** torque pressure to tighten all four Screws with Torx Bits no. 6.



**CHECK IF THE BATTERY O-RING POSITION IS CORRECT BEFORE CONTINUING!**





### 4.1.6 Screw Cover Assy

Grip the *Screw Cover Assy* using fingers.



Position the *Screw Cover Assy* into the *Frame Assy*.



Use **8 NCM** torque pressure to tighten the two *Screws* with Philips Bit.



Close the *Camera Lens Cover* using fingers.





## 4.1.7 Battery & Battery Cover

Use fingers to insert the contact end of the *Battery* into the cavity.



Press the *Battery* down into the cavity.



Place the *Battery Cover* on the phone at the top position firstly.



Snap the *Battery Cover* into place at the bottom position.



## Battery Cover *continued*

Use Nylon Pointer to turn the *Latch* clockwise.



Lock the *Latch* as shown by the arrow in picture.





## 5 Revision history

Rev.	Date	Changes / Comments
1	2008-05-22	1st release
2	2008-6-17	Add adhesive gasket
3	2008-10-21	Update tool number